

Morphology of the male genitalia of *Brachymyrmex* and their implications in the Formicinae phylogeny

Christopher M. Wilson¹, Autumn Smith-Herron², Jerry L. Cook¹

1 Sam Houston State University, Department of Biological Sciences, 1900 Ave. I Huntsville TX, USA **2** Texas Invasive Species Institute, Sam Houston State University, PO Box 2506, Huntsville TX, USA

Corresponding author: Christopher M. Wilson (christopher.wilson2@unt.edu)

Academic editor: Michael Ohl | Received 7 April 2016 | Accepted 25 May 2016 | Published 27 June 2016

<http://zoobank.org/D4734A85-8600-4046-94F5-4364FD7D8E36>

Citation: Wilson CM, Smith-Herron A, Cook JL (2016) Morphology of the male genitalia of *Brachymyrmex* and their implications in the Formicinae phylogeny. Journal of Hymenoptera Research 50: 81–95. doi: 10.3897/JHR.50.8697

Abstract

The male genitalia of *Brachymyrmex* are examined and terminology clarified. We document two conformation groups based on the lateral carina, conformation 1 has a complete lateral carina that reaches the apex of the valviceps and in conformation 2 the lateral carina is broken with the apical end projected dorsally. Previously documented species are evaluated in the context of this new information. We offer support for the movement of *Brachymyrmex* into the resurrected tribe Myrmelachistini based on the morphology of the penisvalvae, and offer definitive methods of assigning unknown specimens to this genus. This study provides histological methodologies for the preparation, differentiation, and permanent storage of minute ant genitalia structures and the associated musculature.

Keywords

Brachymyrmex, genitalia, morphology, penisvalvae, phylogeny

Introduction

The ant genus *Brachymyrmex* Mayr, 1868 exists in a state of taxonomic confusion. The small workers are notably devoid of good species delineating characters, and their distributions are not well represented in collections. This “miserable little genus” (Creighton 1950) has been largely ignored in systematic myrmecological works. Currently there are 60 valid species, of which only 21 contain male descriptions, and five of these have genitalia illustrations. The male genitalia offer species level characters that are desperately needed for this taxonomically challenging group (Quirán et al. 2004). In order to utilize the characters to the best of our ability we must first understand their morphology. Boudinot (2013) has provided a comprehensive review of the morphological structures and musculature associated with ant male genitalia, allowing for comparative studies across ants as a group.

Taxonomic history of *Brachymyrmex*

Brachymyrmex was described by Mayr (1868) from the type species *Brachymyrmex patagonicus*. Forel (1878) included *Brachymyrmex* in the subfamily Camponotinae, and in the tribe Plagiolepidini (Forel 1893). Ashmead (1905) included the Plagiolepidini in the subfamily Formicinae. Forel (1912) erected the tribe Myrmelachistini and defined the tribe as having females with an antennomere count of 9 or 10, males being 10 or 11-merous, and included the genera *Aphomyrmex*, *Brachymyrmex*, *Myrmelachista*, and *Rhopalomyrmex*. Emery (1925) redefined the Myrmelachistini as having fewer than 12 antennomeres, with a distinct antennal club. This redefinition removed *Brachymyrmex* from the Myrmelachistini and Emery placed it in the tribe Dimorphomyrmicini. Emery included along with *Brachymyrmex*, the genera *Aphomomyrmex*, *Cladomyrma*, *Dimorphomyrmex*, and *Gesomyrmex*, based on the 8 to 9 merous antennomere count lacking an antennal club, short frontal carinae, and large eyes. Emery further considered *Aphomyrmex*, *Brachymyrmex*, and *Cladomyrma* to be closely related and had them comprise the subtribe Brachymyrmicini. Wheeler (1929) treated *Dimorphomyrmex* as a junior synonym of *Gesomyrmex*, and concluded that *Gesomyrmex* was not closely related to the other members of Dimorphomyrmicini. As a result Wheeler raised Emery's subtribe Brachymyrmicini to tribal status, and resurrected Gesomyrmicini to include *Gesomyrmex*. Wheeler and Wheeler (1976, 1985) concluded *Aphomomyrmex*, *Brachymyrmex*, *Cladomyrma*, *Euprenolepis*, *Paratrechina*, *Petelomyrmex*, *Prenolepis*, and *Stigmatopoda* to be in the Brachymyrmicini, using larval characters. Agosti (1991) placed *Brachymyrmex* within the *Pseudolasius* genus-group defined by widely separated hind coxae, the petiole ventrally u-shaped, a simple helcium which is antero-ventrally often concealed by the anteriorly fused sternite and tergite. Bolton (2003) transferred *Brachymyrmex* to the Plagiolepidini. Recently Ward et al. (2016) transferred both *Brachymyrmex* and *Myrmelachista* to the Myrmelachistini, which they resurrected. Ward et al. define this group as having the following shared worker characters: a reduced antennomere count (9–10-merous), five mandibular teeth, petiolar node inclined anteriorly, with the base of abdominal segment III completely

fused tergosternally on each side of the helcium, and a plesiomorphic 6,4 palp formula that is reduced to 5,4 in some *Myrmelachista* (Ward et al. 2016).

Santschi (1923) provided the last revision of the group, designating many new species and subspecies. His descriptions, however, are of little value, as they are short and include few comparative characters. In his revision Santschi erected the subgenus *Brysha*, which he defined by having dimorphic workers, short and flared sepals of the proventriculus, and erect hairs on the scape and legs. *Brysha* was provisionally synonymized under *Brachymyrmex* by Brown (1973). Although most *Brachymyrmex* have monomorphic workers; at least two species are dimorphic and *Brysha* may need to be resurrected (Ortiz and Fernández 2014).

The genus has a wide diversity of life histories. Most species are generalist nesters that nest in leaf litter, under stones, or under bark; at least two species have a distinct replete caste; while others are arboreal nesting under epiphyte mats or in small plant cavities. By contrast, the closely-related *Myrmelachista* are obligate arboreal nesting ants (Longino 2006).

As our understanding of ant evolution progresses, the need for additional taxonomic and systematic information is increasing. The primary source for morphological characters in ants is worker morphology. This trend is easy to understand as workers are ubiquitous in the environment, often being the only caste collected and certainly the most prevalent. Queens and males on the other hand are less-frequently encountered, as they are usually within nests or produced only for brief periods. The reproductive casts have thus been largely neglected. Males are largely ignored, and therefore represent an untapped source of morphological characters for taxonomic and phylogenetic use. Moreover, when collected, males may be difficult or even impossible to associate with their workers. However, males may be associated through careful collecting and molecular phylogenies. A recent movement among ant researchers has been to pay more attention to males, both when collecting in the field and unassociated males (Boudinot 2013, Boudinot 2015, Deyrup and Cover 2004, LaPolla et al. 2012, and Yoshimura and Fisher 2007, 2009, 2012).

The most useful character for males are arguably the genitalia, and males, like workers, range in size from the *Dorylus* “sausage flies” to remarkably small *Brachymyrmex*. Viewing and manipulating the male genitalia of larger species is often simple enough; most genitalia are even large enough to point mount for permanent storage. Smaller species, however, are neither simple to manipulate nor store. This has led some authors to not fully dissect the genitalia from small males obtaining images *in situ* either through compound microscopy or scanning electron microscopy (SEM) (LaPolla et al. 2012, and Ortiz and Fernández 2014). With the high cost and low availability of SEM, stereoscopic microscopy is more available, although resolution at 40× is often poor. Due to the low resolution at this magnification, small genitalic structures tend to blend together and become difficult to interpret *in situ*. While there is value in the structure of an intact genital capsule, there remains a large portion of both the volsella, and penisvalva that cannot be viewed, losing potentially important characters.

Here we present methods for dissection and permanent storage via slide mounting of small ant genitalia, with an additional option for muscle fixture and the ability to

clear structures for SEM. Slide mounting genitalia allows examination at much higher magnifications than under stereoscopic microscopy, without the need for sputter coating or environmental SEM prep. Additionally the remainder of the specimen remains intact, losing, at most, only the last three segments. Notes on the genitalia of *Brachymyrmex* and their implications on the Formicinae phylogeny are presented using the described dissection methodologies. It is our hope that this paper provides a greater understanding of the male genitalia characters for *Brachymyrmex*, and encourages renewed interest in this “miserable little genus”.

Materials and methods

Tissue sampling

For this study we sampled 16 species/morphospecies of *Brachymyrmex*, specimens were taken from the first author’s personal collection (CMWC), the Sam Houston State University Entomology Collection (SHSUE), the John T. Longino collection (JTLC), or accessed via AntWeb.org. Specimens from the collections were either in 95% EtOH or dried. Once dissected, bodies without genitalia were returned to the collections dried and point mounted, with the genitalia deposited in the CMWC on slides. The genitalia were dissected under an Olympus SZX12 dissecting microscope with a maximum 115× magnification mounted with a Olympus DP72 camera. Examined under an Olympus BX53 compound microscope with 10×, 40×, and 60× planapochromatic objectives with differential interference contrast prism mounted with a Olympus DP72 camera, and an Olympus B-Max 41 compound microscope with 10×, 40×, and 60×, with universal and planapochromatic objectives with either bright-field or phase-contrast condenser mounted with a Olympus DP-12 camera. Additional specimens were prepared for SEM using a Vega Scan high vacuum micrograph. Photos taken with the aforementioned cameras were stacked by hand using Adobe Photoshop CS6.

Microtechnique

The procedures for the unstained whole mounts are as follows. The terminal segments of male reproductive organs were removed with a surgical scalpel and size 000 insect pins. Tissues were transferred and presoaked in a 20% sodium hydroxide (NaOH) solution for ca. 30 minutes to dissolve muscle and soft tissues. The remaining sclerites were neutralized with a 20% solution of Acetic acid ($C_2H_4O_2$) for 5 minutes. Dehydration of tissues was initiated in 70% ethanol and continued at 20 min intervals through a graded series of ethanol washes, ending in two final washes with 100% ethanol. Tissues were cleared to near transparency with an initial introduction to xylene via a 50:50 solution of xylene:ethanol, and two 20 minutes washes in histological grade xylene. Prepared specimens were permanently mounted with dammar balsam mounting me-

dia. Alternatively, specimens can be directly taken from 100% ethanol and mounted in euparal. Slides are placed on a pre-warmed slide warmer and allowed to cure overnight.

The procedures for stained whole mounts are as follows. The terminal segments of male reproductive organs were removed with a surgical scalpel and size 000 insect pins. In order to examine the insertion and attachment sites for all muscles, excised tissues were not dissolved. Hydration of reproductive tissues were initiated in 70% ethanol and regressed to a final wash in deionized water. Prepared tissues were stained for 20 minutes in Harris Hematoxylin (without counterstain), and washed in an acid alcohol de-stain for 5–10 seconds. Stained tissues were then dehydrated with ethanol through an ascending graded series, cleared in xylene and permanently mounted with Damar Balsam mounting media. Examination of prepared tissue mounts follows the description above. The figures presented here are grouped by similar morphology and grouping statements accompany the respective figures.

Results

The terminology herein follows Boudinot (2013). The genital capsule is composed of three paired valves, sternum IX, and the cupula. Working from medial to lateral we find a paired median valve termed the penisvalva, each segment of the penisvalva is composed of an arm-like apophysis termed the valvura, and the distal components or valviceps. The paired penisvalvae are joined dorsomedially by the penisvalva membrane. On either side of the penisvalva are the paired volsellae, which are attached to the basimere via the basivolsella and volsellar membrane. The volsellae themselves are composed of the parossiculus, the cuspis, and the digitus which is basolaterally articulated with the parossiculus. The lateral most paired valves are the parameres, which are composed of a large dish like basimere, and an elongated distal telomere. The cupula is a small thin sclerite attached to abdominal tergum IX and the volsella, and is easily left behind when removing the genital capsule. We have not examined the cupula of *Brachymyrmex*.

Penisvalvae

The paired penisvalvae of *Brachymyrmex* show tremendous variation in general shape, ranging from scimitar, to sickle-shaped, and quadrate. All species in which the males have been examined show dentition on the ventral ridge of the penisvalvae, which is conspicuously absent in *Myrmelachista* (though it should be noted that dentition is present throughout many of the formicids) (Fig. 1).

LaPolla and Longino (2006) suggest that the dorsal placement of the apodemal ridge in *Brachymyrmex*, *Cladomyrma*, and *Myrmelachista* as a potential synapomorphy for these three genera. A clarification of terms is needed. The penisvalva is composed of two parts, the valvura and the valviceps. The valvura bears all of the muscular insertions, and is an internal apophysis while the valviceps is an external blade like

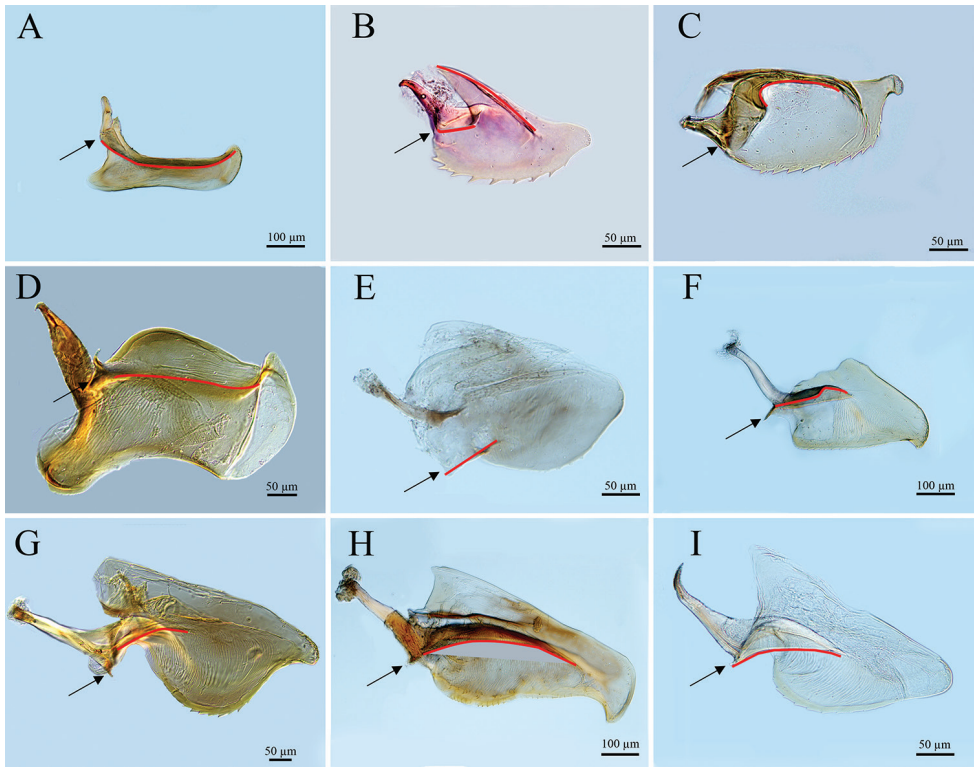


Figure 1. Ectal views of the right penisvalvae of *Myrmelachista* sp. **A** *Brachymyrmex* CMW-012 **B** *Brachymyrmex patagonicus* **C** *Acropyga exsanguis* **D** *Stigmatocros* sp. **E** *Camponotus tonduzi* **F** *Lasius* sp. **G** *Gigantiops destructor* **H** *Prenolepis imparis* **I** Black Arrows lateral apodeme, Red Lines lateral carinae.

structure. The insertion of muscle *k* (= dorsal gonostyle/volsella complex penisvalvar muscle) delimits the valvura posterodorsally.

As the base of the valvura is produced laterally, it may be referred to as the “lateral apodeme” (Fig. 1). Muscles *i* (= ventroapical parameral-penisvalvar muscle) and *l* (= lateral parameral-penisvalvar muscle) attach to the penisvalva via the lateral apodeme. The apodeme and its associated musculature allow the penisvalvae to pivot on the mediosagittal plane. The lateral apodeme in most ants is situated at the anterior end of a lateral carina (referred to by Lapolla and Longino as the “apodemal ridge”). This lateral carina is on the external surface of the valviceps (i.e. is not internal) and therefore cannot be an apodeme. The lateral carina cups the volsella dorsally *in situ*, and is a structure which displays taxonomically valuable variation. Additionally the “dorsally placed” carina (“apodemal ridge”) interpretation of Lapolla and Longino (2006) is anatomically imprecise and suggest that the lateral carina has migrated dorsally to a position which is dissimilar to other Formicinae. Instead, it is apparent that the lateral carina is unmodified in position and that, rather, the anterodorsal region of the valviceps has been reduced such that the lateral apodeme delimits the valviceps anterodorsally.

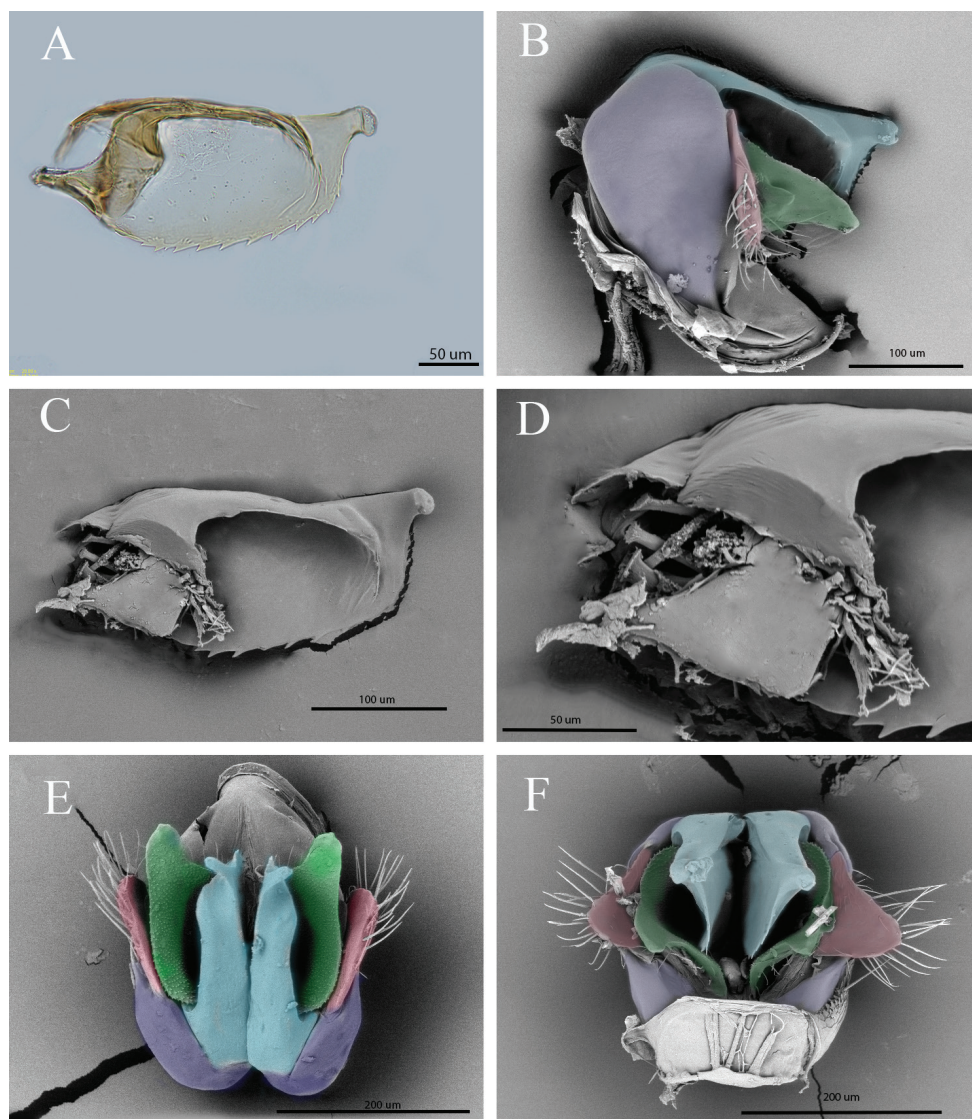


Figure 2. External genitalia of *Brachymyrmex patagonicus*, compound light microphotograph of the penisvalva in ectal view **A** lateral view of the genital capsule with the telomere pulled back to reveal the volsella and penisvalva **B** SEM of the penisvalva in ectal view **C** magnified ectal view of the penisvalva showing the separation of the valvura, the proximal end of the lateral carina, and severed muscular tissue from muscles *k*, and *i* **D** dorsal view of the genital capsule **E** apical view of the genital capsule **F** Colors: **Blue** penisvalvae; **Green** volsella; **Red** telomere; **Purple** baismere.

Two main conformation patterns can be seen in the penisvalval morphology among the *Brachymyrmex* we sampled. In conformation 1 the lateral carina is complete, running from the lateral apodeme to the apex of the valviceps. In this conforma-

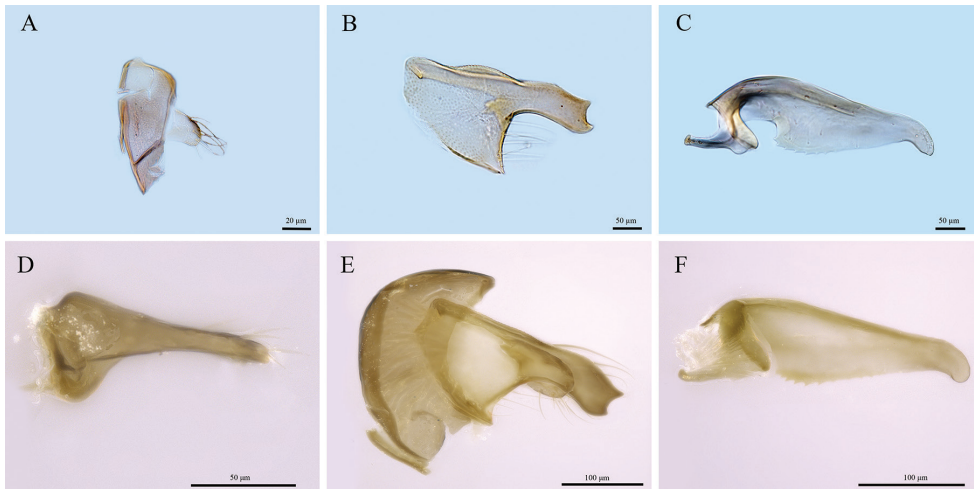


Figure 3. Paramere, volsella, and penisvalva of *Brachymyrmex obscurior* **A–C** *Brachymyrmex coredmoyi* (basimere not present) AntWeb.org, CASENT0740911 Photographed by Veronica M. Sinotte **D–F** Grouping: lateral carinae complete; digitus elongate and bifurcate apically; valvura parallel to the long axis of the valvipes.

tion group the lateral carina forms a sharp curve dorsally near the carina's base (Fig. 1C). This group includes *Brachymyrmex coredmoyi* Forel, 1895, *B. patagonicus* and *Brachymyrmex obscurior* Forel, 1893 (Figs 2A, 3C, F). The general shape, most notably the lack of a raised anterior portion along the valvipes blade, can also be seen in the illustrations of *Brachymyrmex brevicronis* Emery, 1906 (Quirán 2005), *Brachymyrmex bruchi* Forel, 1912, and *Brachymyrmex oculatus* Santschi, 1919 (Quirán et al. 2004). This conformation is rather distinct among the Formicinae which tend to have a fairly flat, or gently forming a convex lateral carinae (Fig. 1D–I).

The lateral carina of conformation 2 is incomplete being broken apically of the lateral apodeme into an anterior portion, which is continuous with the lateral apodeme, and a posterior portion that is raised dorsally above the blade of the valvipes (Fig. 1B). This conformation group includes all other taxa we examined (Figs 4–6). The broken lateral carina is almost certainly unique and is likely to be a synapomorphy for species with this morphology. Though this is a tentative evaluation that requires further sampling to fully elucidate.

Quirán's (2007) illustration of *Brachymyrmex australis* Forel, 1901 is difficult to place in either conformation group. The penisvalvae illustration lacks a raised anterior portion, however the lateral carina is not indicated, furthermore the volsella is similar to those in conformation 2, with a medial concavity (see discussion of the volsella below). Ortiz and Fernández's (2014) description, and accompanying figure for the male of *Brachymyrmex pilipes* Mayr, 1887 is inconclusive. The majority of the valvipes is covered by the telomere, and the volsella is completely hidden. That being said, the dorsum of the apical end of the valvipes does appear to be projected upwards, as we see in conformation 2.

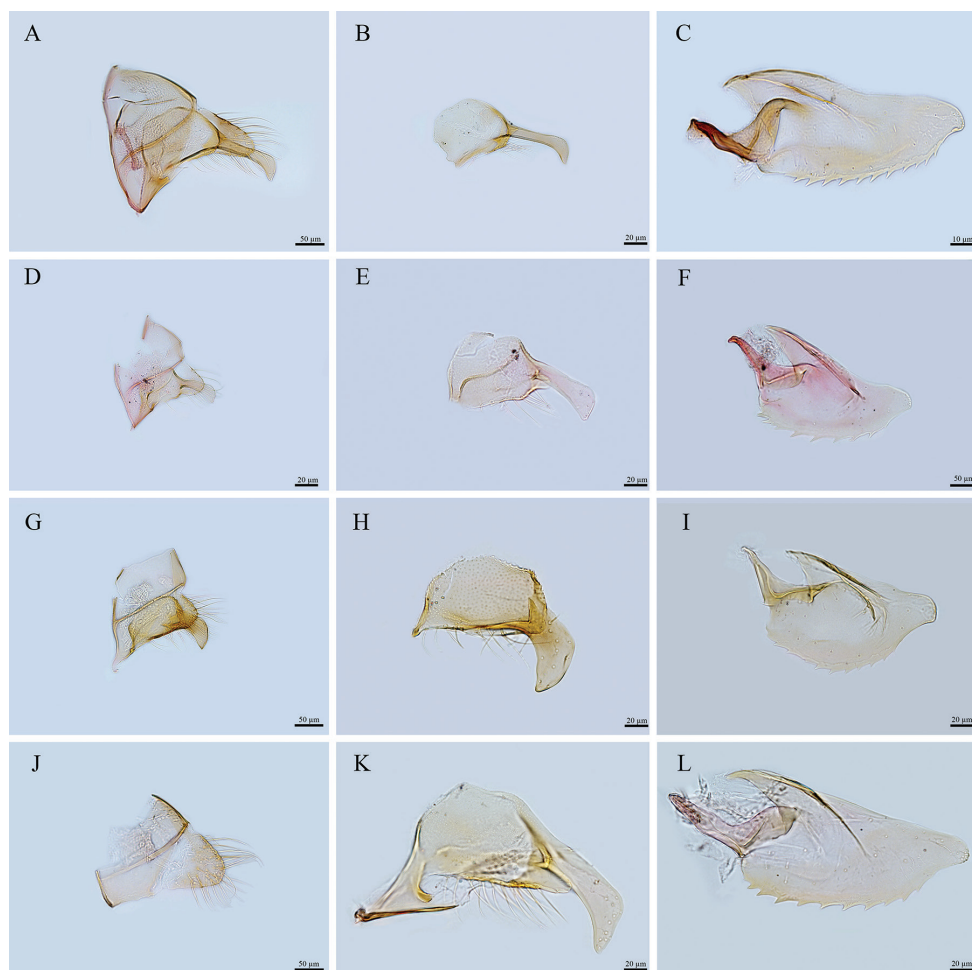


Figure 4. Paramere, volsella, and penisvalva of *Brachymyrmex* CMW-011 (basivolsella fragmented) **A–C** *Brachymyrmex* CMW-012 (basivolsella fragmented) **D–F** *Brachymyrmex cavernicola* **G–I** *Brachymyrmex heeri* **J–L** Grouping: lateral carinae broken; digitus elongate, apex curving ventrad and not bifurcate apically; valvura oblique to the long axis of the valviceps.

Volsella

The volsella of *Brachymyrmex* follows the pattern of some *Myrmelachista* where the cuspis is reduced to a small triangular protrusion affixed to the wall of the digitus (*B. obscurior*, (Fig. 3B) *B.* CMW-006, *B.* CMW-003, *B.* CMW-008, *B.* CMW-010, (Fig. 5B, E, H, K) *B.* JTL-004, *B.* JTL-005, and *Brachymyrmex depilis* Emery, 1893 (Fig. 6H, K)), or completely absent (*B.* CMW-007, *B.* CMW-009 (Fig. 6B, E)). Unlike *Myrmelachista*, there is little variation in the cuspis, though in some species the cuspis is slightly protruded (*B.* CMW-011, *B.* CMW-012, *Brachymyrmex cavernicola* Wheeler, 1938 and *Brachymyrmex heeri* Forel, 1874 (Fig. 4B, E, H, K)). *Brachymyrmex*

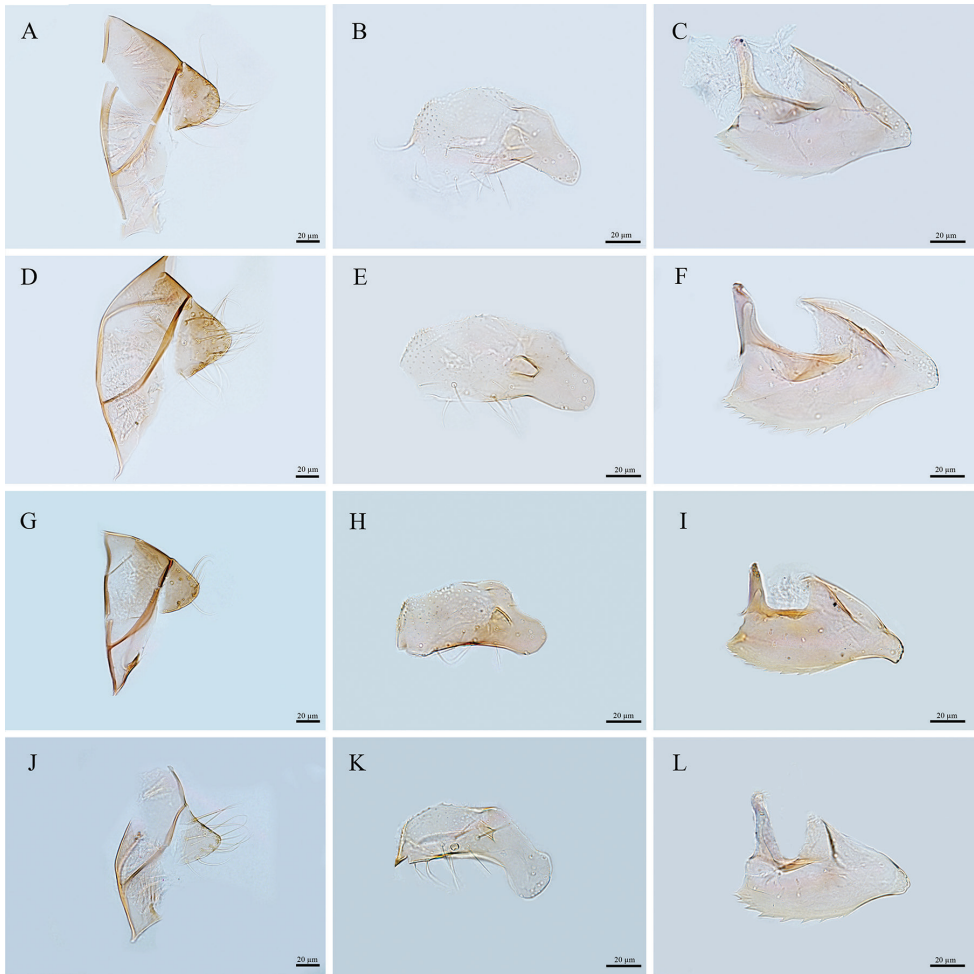


Figure 5. Paramere, volsella, and penisvalva of *Brachymyrmex* CMW-006 (basivolsella fragmented) **A–C** *Brachymyrmex* CMW-003 **D–F** *Brachymyrmex* CMW-008 **G–I**: *Brachymyrmex* CMW-010 **J–L** Grouping: lateral carinae broken; digitus lobate; valvura perpendicular to the long axis of the valviceps.

cordemoyi is unique amongst the specimens we examined, the cuspis is ovate, and well developed (in regards to *Brachymyrmex*), and a number of flexuous setae are present (Fig. 3E). In addition the digitus also bears setae, which is similarly unique. A row of flexuous setae is present ventromedially on the basivolsella in all taxa we examined and can serve as a method of orienting the dissected volsella. The shape of the digitus ranges from a subtriangular, or subquadrate short broad projection (*B. patagonicus* (Fig. 7C), *B. CMW-006*, *B. CMW-003*, *B. CMW-008*, *B. CMW-010* (Fig. 5B, E, H, K)) to a long narrow structure with the apical portion either curving ventrad (*B. CMW-0011*, *B. CMW-0012*, *B. cavernicola*, and *B. heeri* (Fig. 4B, E, H, K)), or bifurcate (*B. cordemoyi*, and *B. obscurior* (Fig. 3B, E)). The basivolsella is broadly flattened bending to

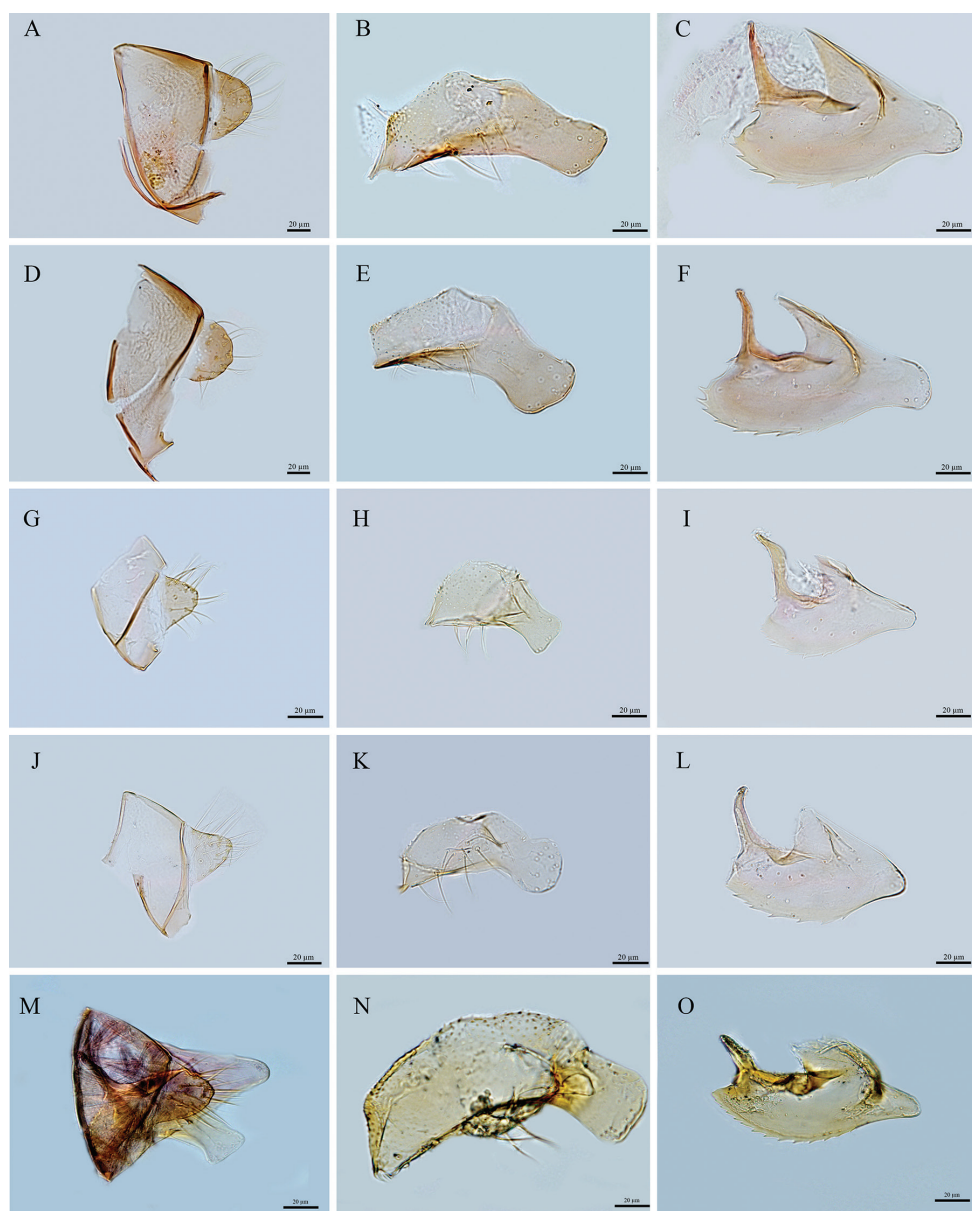


Figure 6. Paramere, volsella, and penisvalva of *Brachymyrmex* CMW-007 (basivolsella fragmented) **A–C** *Brachymyrmex* CMW-009 (basivolsella fragmented) **D–F** *Brachymyrmex* JTL-004 (basivolsella fragmented) **G–I** *Brachymyrmex* JTL-005 (basivolsella fragmented) **J–L** *Brachymyrmex depilis* (basivolsella fragmented) **M–O** Grouping: lateral carinae broken; digitus lobate; valvura perpendicular to the long axis of the valviceps.

curve around the penisvalva (Fig. 2E, F), as a result of disarticulating the volsella from the baimere the basivolsellae are prone to fragmentation this has been noted in the figure legends were it has occurred.

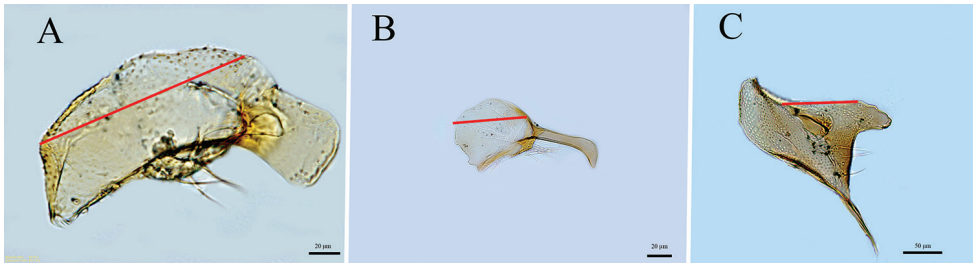


Figure 7. Ectal views of the volsella in *Brachymyrmex depilis* **A** *Brachymyrmex* CMW-011 **B** *Brachymyrmex patagonicus* **C** Red lines running from the dorsum of both the distal and apical ends of the volsella not including the digitus.

The modification to the lateral carina of the valviceps seen in both conformation groups seem to be related to the method in which the volsella rests against the valviceps *in situ*. As a result the dorsal surface of the volsella in conformation 1 is unbroken, while the dorsal surface of conformation 2 has a distinct concavity medially (Fig. 7)

Paramere

The telomeres are separated from the basimere by a membrane. Of the structures associated with the genital capsule, the telomeres of *Brachymyrmex* show the least variation in terms of overall shape and size. They are generally short and broad with numerous elongate flexuous setae. Of the taxa we examined, the telomeres of *B.* CMW-007, and *B.* CMW-009 (Fig. 6A, D) are as broad as long and hemispherical in shape; those of *B. cavernicola*, *B. heeri*, (Fig. 4G, J) *B.* CMW-006, *B.* CMW-003 *B.* CMW-008, *B.* CMW-010 (Fig. 5A, D, G, J), *B.* CMW-012 (Fig. 4D), *B.* JTL-004, *B.* JTL-005, and *B. depilis* (Fig. 6G, J, M) are slightly longer than broad and subtriangular; and those of *B. cordemoyi*, *B. obscurior* (Fig. 3A, D) and *B.* CMW-11 (Fig. 4A) are longer than broad, and finger like in shape. The basimere of *Brachymyrmex* are sub-triangular, and broad dorsally. The basimere are also difficult to separate from the volsella completely intact and often fragment.

Discussion

Our findings demonstrate that males of this genus may offer more taxonomic information for understating the evolution within the genus, and for species delineations than their worker counterparts. The morphology of the penisvalva lateral carina displayed in the two conformation groups seen in *Brachymyrmex* likely represent two distinct clades within the genus, and when compared on an intraspecific level there seems to be little variation in genital morphology. Of course additional sampling is needed to confirm this. In regard to the tribal position of *Brachymyrmex* in light of the conclu-

sive phylogeny of Blaimer et al. (2015) the characters that have previously been used to unite various genera with *Brachymyrmex*, namely that of the reduced antennomere count, and the reduction of the anterodorsal region of the valviceps must be considered homoplasious.

Within *Brachymyrmex* Ortiz and Fernández (2014) redescribed two dimorphic species of *Brachymyrmex*, *B. pilipes*, and *Brachymyrmex micromegas* Emery, in Santschi, 1923. While these ants do fall within the current definition of the genus, the authors raised questions as to the generic placement of these species. As noted previously their figure for the male of *B. pilipes* is inconclusive, however it does outwardly resemble the morphology seen in our conformation 2. Unfortunately the male of *B. micromegas* is unknown. We hope that our work here stimulates future studies on these dimorphic species to include dissected male genitalia, as these traits may help to accurately place dimorphic species.

Future researchers collecting *Brachymyrmex* are encouraged to exhaustively, and carefully hunt for males along with associated workers. Those running Malaise and UV light traps should also be alert for male specimens. To that regard *Brachymyrmex* holds a number of invasive ant species, *B. patagonicus* for example is a widespread and has reached pest status in the United States (MacGown et al. 2007). The males of this species can accumulate in UV light traps in the hundreds (Danny McDonald personal communication). Our results here should be useful in obtaining a definitive genus diagnosis, and in the United States our native species, *B. depilis*, belongs to conformation group 2 which is easily separated from the invasive *B. patagonicus*, and *B. obscurior* both of which belong to conformation group 1. Outside of the United States the uniqueness of *Brachymyrmex* genitalia should serve as a valuable tool for invasive species detection with the implementation of general collecting methods.

Acknowledgments

The authors would like to thank Brendon Boudinot for reviewing earlier versions of this manuscript, his comments substantially improved this work. We would also like to thank Jack Longino for contributing much-needed specimens without which much of this genus would still be a mystery.

References

- Agosti D (1991) Revision of the oriental ant genus *Cladomyrma*, with an outline of the higher classification of the Formicinae (Hymenoptera: Formicidae). *Systematic Entomology* 16: 293–310. doi: 10.1111/j.1365-3113.1991.tb00690.x
- Ashmead WH (1905) A skeleton of a new arrangement of the families, subfamilies, tribes and genera of the ants, or the superfamily Formicoidea. *Canadian Entomologist* 37: 381–384. doi: 10.4039/Ent37381-11

- Blaimer BB, Brady SG, Schultz TR, Lloyd MW, Fisher BL, Ward PS (2015) Phylogenomic methods outperform traditional multi-locus approaches in resolving deep evolutionary history: a case study of formicine ants. *BMC Evolutionary Biology* 15: 257. doi: 10.1186/s12862-015-0552-5
- Bolton B (2003) Synopsis and classification of Formicidae. *Memoirs of the American Entomological Institute* 71: 1–370.
- Boudinot BE (2013) The male genitalia of ants: musculature, homology, and functional morphology (Hymenoptera, Aculeata, Formicidae). *Journal of Hymenoptera Research* 30: 29–49. doi: 10.3897/jhr.30.3535
- Boudinot BE (2015) Contributions to the knowledge of Formicidae (Hymenoptera, Aculeata): a new diagnosis of the family, the first global male-based key to subfamilies, and a treatment of early branching lineages. *European Journal of Taxonomy* 120: 1–62. doi: 10.5852/ejt.2015.120
- Brown WL Jr. (1973) A comparison of the Hylean and Congo-West African rain forest ant faunas. In: Meggers BJ, Ayensu ES, Duckworth WD (Eds) *Tropical forest ecosystems in Africa and South America: a comparative review*. Smithsonian Institution Press, Washington, DC, 161–185.
- Deyrup M, Cover S (2004) A new species of *Odontomachus* ant (Hymenoptera: Formicidae) from inland ridges of Florida, with a key to *Odontomachus* of the United States. *Florida Entomologist* 87: 136–144. doi: 10.1653/0015-4040(2004)087[0136:ANSOOA]2.0.CO;2
- Emery C (1925) Hymenoptera. Fam. Formicidae. Subfam. Formicinae. *Genera Insectorum* 183: 1–302.
- Forel A (1878) Études myrmécologiques en 1878 (première partie) avec l'anatomie du gésier des fourmis. *Bulletin de la Société Vaudoise des Sciences Naturelles* 15: 337–392.
- Forel A (1893) Sur la classification de la famille des Formicides, avec remarques synonymiques. *Annales de la Société Entomologique de Belgique* 37: 161–167.
- Forel A (1912) Formicides néotropiques. Part VI. 5me sous-famille Camponotinae Forel. *Mémoires de la Société Entomologique de Belgique* 20: 59–92.
- LaPolla JS, Kallal RJ, Brady SG (2012) A new ant genus from the Greater Antilles and Central America, *Zatania* (Hymenoptera: Formicidae) exemplified the utility of male and molecular systems. *Systematic Entomology* 37: 200–214. doi: 10.1111/j.1365-3113.2011.00605.x
- LaPolla JS, Longino JT (2006) An unusual new *Brachymyrmex* Mayr (Hymenoptera: Formicidae) from Costa Rica, with implications for the phylogeny of the Lasiine tribe group. *Proceedings of the Entomological Society of Washington* 108: 297–305.
- Longino JT (2006) A taxonomic revision of the genus *Myrmelachista* (Hymenoptera: Formicidae) in Costa Rica. *Zootaxa* 1141: 1–54.
- MacGown JA, Hill JG, Deyrup MA (2007) *Brachymyrmex patagonicus* (Hymenoptera: Formicidae), an emerging pest species in the southeastern United States. *Florida Entomologist* 90: 457–464. doi: 10.1653/0015-4040(2007)90[457:BPHFAE]2.0.CO;2
- Ortiz CM, Fernández F (2014) *Brachymyrmex* species with tumuliform metathroacic spiracles: description of three new species and discussion of dimorphism in the genus (Hymenoptera: Formicidae). *ZooKeys* 371: 13–33. doi: 10.3897/zookeys.371.6568

- Quirán EM, Martínez JJ, Bachmann AO (2004) The Neotropical genus *Brachymyrmex* Mayr, 1868 (Hymenoptera: Formicidae) in Argentina. Redescription of the type species, *B. patagonicus* Mayr, 1868; *B. bruchi* Forel, 1912 and *B. oculatus* Santschi, 1919. *Acta Zoológica Mexicana* 20: 273–285.
- Quirán EM (2005) El género Neotropical *Brachymyrmex* Mayr (Hymenoptera: Formicidae) en la Argentina. II: Redescipción de las especies *B. admotus* Mayr, de *B. brevicornis* Emery y *B. gaucho* Santschi. *Systematics, Morphology, and Physiology* 34: 761–768.
- Quirán EM (2007) El género Neotropical *Brachymyrmex* Mayr (Hymenoptera: Formicidae) en la Argentina. II: Redescipción de las especies: *B. aphidicola* Forel, de *B. australis* Forel y *B. constictus* Santschi. *Systematics, Morphology, and Physiology* 36: 699–706.
- Ward PS, Blaimer BB, Fisher BL (2016) A revised phylogenetic classification of the ant subfamily Formicinae (Hymenoptera: Formicidae), with resurrection of the genera *Colobopsis* and *Dinomyrmex*. *Zootaxa* 4072(3): 343–357. doi: 10.11646/zootaxa.4072.3.4
- Wheeler WM (1922) Ants of the American Museum Congo expedition. *Bulletin of the American Museum of Natural History*, New York, 1139 pp.
- Wheeler WM (1929) The identity of the ant genera *Gesomyrmex* Mayr and *Dimorphomyrmex* Ernest André. *Psyche* (Cambridge) 36: 1–12. doi: 10.1155/1929/71489
- Wheeler GC, Wheeler J (1976) Ant larvae: review and synthesis. *Memoirs of the Entomological Society of Washington* 7: 1–108.
- Wheeler GC, Wheeler J (1985) A simplified conspectus of the Formicidae. *Transactions of the American Entomological Society* 111: 255–264.
- Yoshimura M, Fisher BL (2007) A revision of male ants of the Malagasy region (Hymenoptera: Formicidae): Key to subfamilies and treatment of the genera of Ponerinae. *Zootaxa* 1654: 21–40.
- Yoshimura M, Fisher BL (2009) A revision of male ants of the Malagasy region (Hymenoptera: Formicidae): Key to genera of the subfamily Proceratiinae. *Zootaxa* 2216: 1–21.
- Yoshimura M, Fisher BL (2012) A revision of the Malagasy endemic genus *Adetomyrma* (Hymenoptera: Formicidae: Amblyoponinae). *Zootaxa* 3341: 1–31.

Supplementary material I

Specimen locality data

Authors: Christopher M. Wilson, Autumn Smith-Herron, Jerry L. Cook

Data type: Specimen locality data

Explanation note: Locality data for dissected specimens.

Copyright notice: This dataset is made available under the Open Database License (<http://opendatacommons.org/licenses/odbl/1.0/>). The Open Database License (ODbL) is a license agreement intended to allow users to freely share, modify, and use this Dataset while maintaining this same freedom for others, provided that the original source and author(s) are credited.