

***Trichothurgus bolithophilus* sp. n. (Hymenoptera, Megachilidae) a bee nesting in horse manure pads in Patagonia, Argentina**

Laura C. Sarzetti^{1,†}, Jorge F. Genise^{1,‡}, M. Victoria Sánchez^{1,§}

¹ CONICET – División Icnología, Museo Argentino de Ciencias Naturales “Bernardino Rivadavia”, Av. Angel Gallardo 470, 1405 Buenos Aires, Argentina

† [urn:lsid:zoobank.org:author:3450ED29-7C5B-493F-A2FE-2EFB6105D6A5](https://zoobank.org/urn:lsid:zoobank.org:author:3450ED29-7C5B-493F-A2FE-2EFB6105D6A5)

‡ [urn:lsid:zoobank.org:author:4BB8BAD9-DA55-40E2-BDB0-0F1FAC3D620A](https://zoobank.org/urn:lsid:zoobank.org:author:4BB8BAD9-DA55-40E2-BDB0-0F1FAC3D620A)

§ [urn:lsid:zoobank.org:author:999404ED-EDDB-4478-9058-62801D63A258](https://zoobank.org/urn:lsid:zoobank.org:author:999404ED-EDDB-4478-9058-62801D63A258)

Corresponding author: Laura C. Sarzetti (lsarzetti@macn.gov.ar)

Academic editor: Jack Neff | Received 14 June 2011 | Accepted 7 August 2012 | Published 15 October 2012

[urn:lsid:zoobank.org:pub:53856007-B375-4238-BEF5-2A7E07A9F760](https://zoobank.org/pub:53856007-B375-4238-BEF5-2A7E07A9F760)

Citation: Sarzetti LC, Genise JF, Sánchez MV (2012) *Trichothurgus bolithophilus* sp. n. (Hymenoptera, Megachilidae) a bee nesting in horse manure pads in Patagonia, Argentina. Journal of Hymenoptera Research 29: 1–14. doi: 10.3897/JHR.29.3529

Abstract

A new species of *Trichothurgus*, described herein, *T. bolithophilus* sp. n., nests in dry horse manure pads in Chubut, Patagonia, Argentina. The simplest nests consisted of one main tunnel ending in a series of 2 cells without partitions between them. In the more complex ones up to 6 cells were connected laterally to the main tunnel. Nests showed signs of reutilization. The behavior of nesting in horse manure is described for the first time in bees.

Keywords

Trichothurgus bolithophilus sp. n., nests, horse manure, Patagonia, Argentina

Introduction

The Lithurgini is a small basal group of the Megachilidae distributed in tropical to temperate and semi-arid regions worldwide (Michener 2000; Litman et al. 2011). The tribe consists of only three genera (*Lithurgus*, *Microthurgus* and *Trichothurgus*) with 61-

64 species, with the genus *Trichothurgus* comprising 13 species (Michener 2000) until now. The biology of the group is relatively well known and the nesting behavior of some of its species has been described in some detail. The members of Lithurgini excavate galleries in dead, soft or relative hard and dry wood (Roberts 1978; Kitamura et al. 2001; Rust et al. 2004; Hannan and Maeta 2007). The nesting behavior of *Lithurgus* species from North America (Parker and Potter 1973; Brach 1978; Roberts 1978), Europe (Malyshev 1930; Cros 1939; Rust et al. 2004), Japan (Kitamura et al. 2001; Hannan and Maeta 2007), Brazil (Camillo et al. 1983) and Australia (Houston 1971) has been studied with different degrees of detail whereas the biology of *Microthurgus corumbae* has been studied in detail (Garófalo et al. 1981; Garófalo et al. 1992). In contrast, the nesting behavior of *Trichothurgus* species is poorly known. There are two mentions about the nests of *T. dubius* from Chile that were barely described by Claude-Joseph (1926) and redescribed later by Rozen (1973). The only reference about the use of dung pads by bees is by Michener (2000, pag. 427 and pers. com.), who mentioned the use of cow manure as nesting substrate by lithurgines without reference to a particular genus or species.

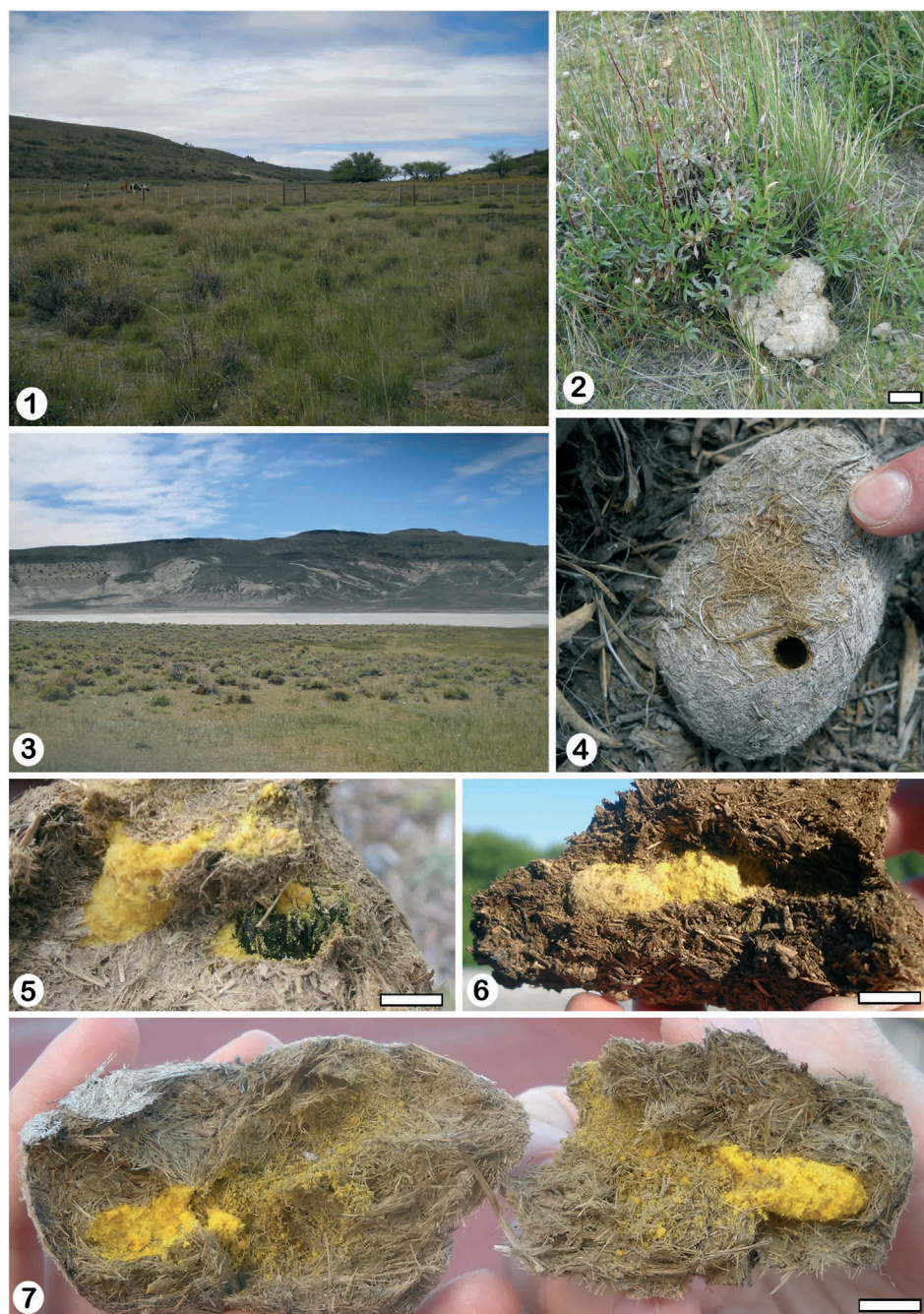
This contribution describes the nests of the new species *Trichothurgus bolitophilus*, in horse dung pads. It represents the first description of the use of dung pads for nesting by bees.

Study area

A total of 6 nests of *Trichothurgus bolitophilus* were found inside dry horse manure at two localities in Chubut Province (Patagonia, Argentina). Five nests were found at the Estancia Las Mellizas (locality 1) (45°04.91'S, 68°02.7'W; 589 m (Fig. 1) and one nest in "Laguna de los Flamencos" (locality 2) (44°37.58'S, 69°07.5'W; 526 m) (Fig. 3). Both localities are included in the driest zone of Chubut, where the annual rainfall ranges between 100 to 150 mm and the mean annual temperatures range between 8 and 11° C (Burry et al. 2005). The vegetation comprises bush steppes of very low coverage with short cushion shrubs, sparse grasses, and *Nassauvia glomerulosa* (Asteraceae) as dominant. In lower areas also are extensive halophytic communities including *Chuquiraga aurea* (Asteraceae), *Atriplex* sp. (Amaranthaceae), and *Frankenia patagonica* (Frankeniaceae) (Burry et al. 2005). At Locality 1 the vegetation included abundant specimens of the introduced *Grindelia chilensis* (Asteraceae), and secondarily *Senecio filaginoides* (Asteraceae). At locality 2 plants of *Azorella monantha* (Araliaceae) were abundant.

Description of nests

The nests were studied and collected in the field during 10 to 14 December 2010. At locality 1, dung pads with nests 1 to 5 were found within a fenced grassy area for



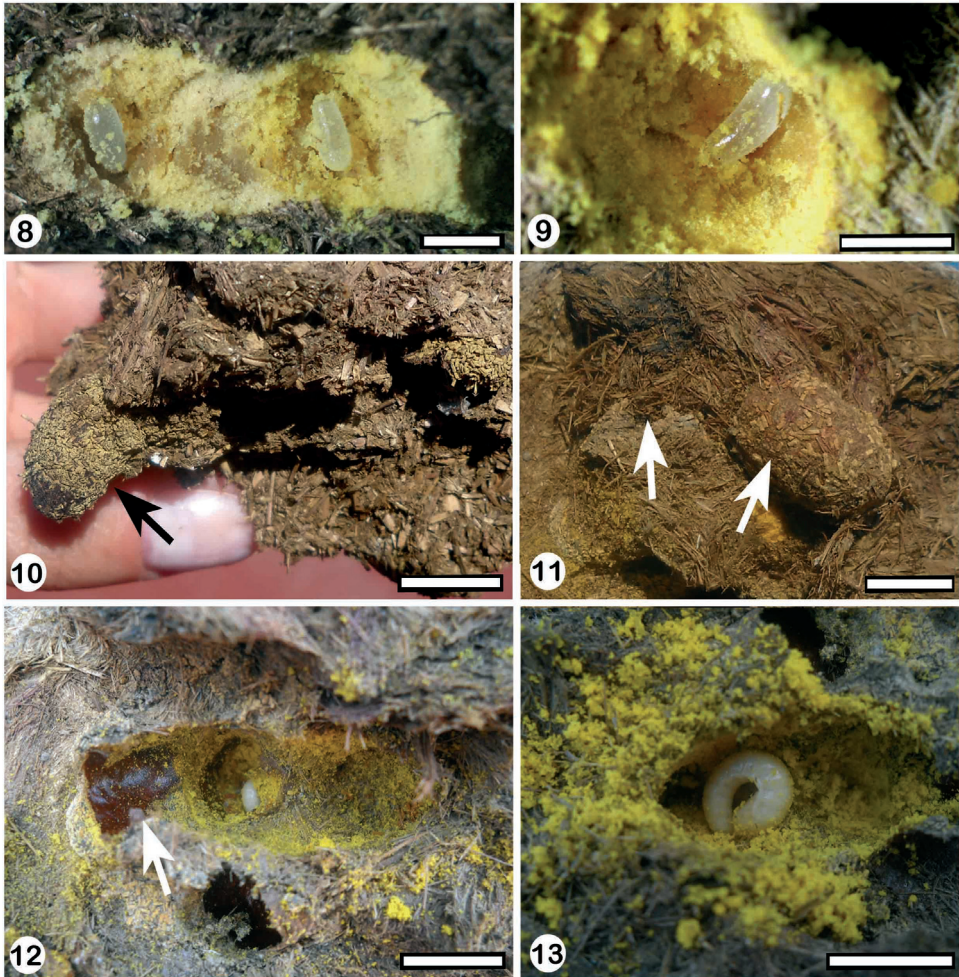
Figures 1–7. **1** general view of locality 1 Estancia Las Mellizas **2** nest 1 at Estancias Las Mellizas **3** general view of locality 2 “Laguna de los Flamencos” **4** nest 6 showing the open entrance hole and dung fibers **5** nest 5 showing the third cell with an alive and immobile female **6** nest 2 showing the provisioned cells with yellow packed pollen **7** unlined tunnels and cells with pollen of nest 6. Scale lines: **Fig 2:** 10 cm, **Figs 5–7:** 1 cm.

horse grazing (Fig. 1). At locality 2, nest 6 was found in a pad near a small saline pond (Figs 3 and 4). The simplest nests consisted of one main tunnel ending in a series of 2 cells without partitions between them. Two of them also showed one short, empty, and blind tunnel. In the more complex ones up to 6 cells were connected also laterally to the main tunnel (Figs 6 and 7). Entrances of the nests were rounded and usually open (Fig. 4). The tunnels and cells were unlined, although they had a smooth surface (Fig. 7). The provisioned cells contained pollen of Asteraceae and Amaranthaceae in roughly equal proportions, and eggs or larvae. In some cases cells also contained remains of old cocoons, indicating reutilization of nests. Beyond these common features, each nest showed different morphologies that need to be described individually.

Nest 1 (Fig. 14): it was excavated in a piece of dung composed of two parts, a bigger one below (L: 11 cm, W: 15 cm, H: 9 cm) and a smaller part on top (L: 10 cm, W: 6 cm, H: 9 cm) (Fig. 2). The entrance was open and located in the middle of the upper part. The main tunnel was 6 cm long and 1 cm in diameter. Its first portion, located entirely in the upper piece of dung, was 4 cm long, vertical, and almost straight (Fig. 14). It continued into the other piece of dung in a short and horizontal portion, 2 cm long. At 5 cm from the entrance there were two opposite series of two cells, without partitions, directly connected to the tunnel (Fig. 14). The cells were vertical, with rounded ends, and closed by a dung disk that was concave outside. These two cells were 2.4 cm long and 1 cm in diameter. The cells were completely filled with yellow packed pollen that was moist, probably because of the mixture with nectar. The provision contained two eggs, each one was inside an ellipsoidal chamber slightly larger than the egg (Figs 8 and 9). The first and anterior egg was at 1.5 cm (N: 2) from the top of the packed provision. The distance between egg chambers was 10 mm (N: 2). The eggs were whitish translucent, 0.5 cm long and 0.15 cm wide, and cylindrical with rounded ends, and were located horizontally inside the chambers (Figs 8 and 9). The main tunnel ended in an open, incomplete, vertical third cell that had an alive, immobile female (Figs 5 and 14).

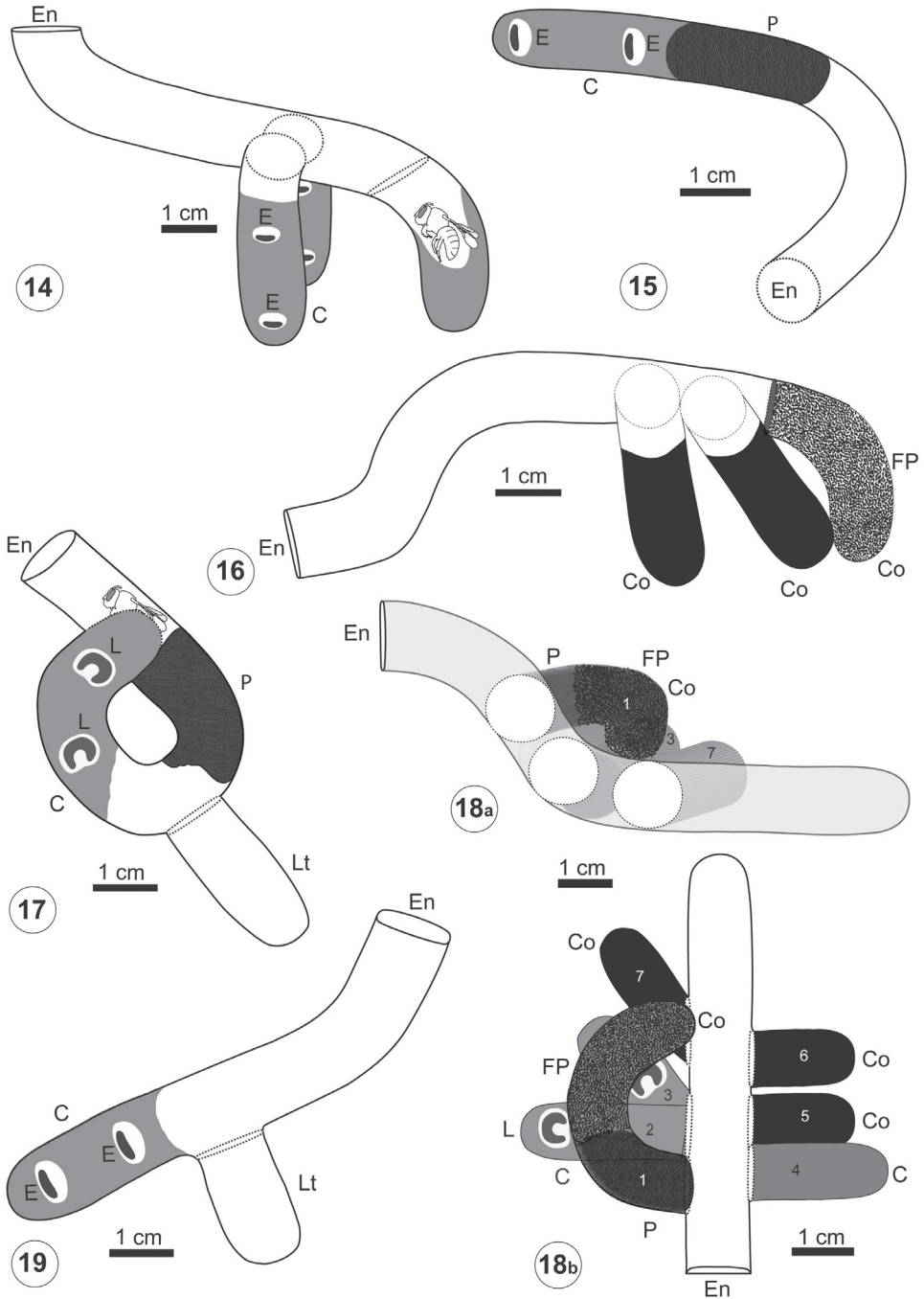
Nest 2 (Fig. 15): it was constructed in one piece of dung 8 cm long, 9 cm wide, and 5.5 cm high (Fig. 6). The entrance was open and located in one side of the pad. The nest showed one curved and horizontal main tunnel, 4.5 cm long and 1 cm in diameter that ended in a series of two cells without a partition between them (Fig. 15). The series of two cells was also horizontal, 2.9 cm long and 1 cm in maximum diameter and closed with a plug of dung fibers of 2.5 cm thick (Figs 8 and 15). The series of cells was provisioned with yellow packed pollen and contained two eggs which were included in individual chambers separated by 0.7 cm from each other. The dung pad also contained old cocoon remains without apparent connections with the tunnels. The cocoons were composed of a thin coriaceous layer of dark brown silk with a varnish-like substance on the smooth inner surface.

Nest 3 (Fig. 16): it was located in one piece of dung 11.2 cm long, 6.6 cm wide, and 4 cm high. The entrance, located laterally in the dung pad, was closed with a thin plug of dung fibers. The main tunnel, 6 cm long and 1 cm in diameter, was sinuous and ended in a cell containing cocoon remains (Fig. 16). The nest had



Figures 8–13. 8 the provisioned cells of nest 6 showing the eggs inside cavities 9 one egg inside the cavity of nest 6 10 third cell of nest 3 showing the fecal pellets attached to the walls 11 cell 1 of nest 5 showing the plug of dung fibers (left arrow) and the random distribution of fecal pellets in cocoon walls (right arrow) 12 old cocoon remains inside cell 2 of nest 5 indicating reutilization of cells 13 cell 2 of nest 5 showing young larvae. Scale lines: **Figs 8–9:** 0.5 cm, **Figs 10–13:** 1 cm.

two other old open cells with emerged cocoons inside. The cells were 2.5 cm long and 1 cm in maximum diameter. The cocoons were shorter than cells (2 cm long) and their walls were similar to those from nest 2 (Fig. 10). The first cell was located in the main tunnel at 6 cm from the entrance and it was vertical, with its bottom pointing downwards. The second cell was located beside the first one, with their bottom pointing laterally. The third, curved cell was located at the end of the main tunnel. The cocoons from the second and third cells had old fecal pellets attached to their walls. The fecal pellets were elliptical yellow-brown, and oval in cross sec-



Figures 14–19. Architecture of *Trichothurgus bolitophilus* nests **14** nest 1 **15** nest 2 **16** nest 3 **17** nest 4 **18a–18b** nest 5, the numbers 1 to 7 indicate the cells and cocoons **19** nest 6. C: provisioned cell, Co: cocoon, E: egg, En: entrance, FP: fecal pellets, L: larva, P: plug of dung fibers. Scale lines: **Figs 14–19:** 1 cm.

tion, with rounded ends. They were 0.9 mm long, 0.4 mm wide, and distributed randomly (Fig. 10, arrow).

Nest 4 (Fig. 17): it was located in a piece of dung 24.5 cm long, 18.4 cm wide, and 7 cm high. The entrance was located up and laterally in the pad. At 1 cm from the entrance there was a dead female inside the main tunnel. The main tunnel was coiled, 4.6 cm long and 1 cm in diameter that was partially filled with dung fibers. At 4.5 cm from the entrance, it was an empty, short lateral tunnel. The main tunnel ended in an open and curved series of two cells without a partition between them. The series of cells, 2.5 cm long and 1.0 cm in diameter, contained yellow packed pollen and two young larvae.

Nest 5 (Fig. 18): it was located in a piece of dung 14.3 cm long, 8.4 cm wide, and 7 cm high. The main tunnel was horizontal, sinuous in vertical section, 6.7 cm long and 1 cm in diameter. At 2.5 cm from the entrance arose a C-shaped secondary tunnel, whose final portion rested over the main tunnel. The secondary tunnel was 4.4 cm long and 1 cm in diameter and contained remains of a cocoon (cell 1). The cocoon showed fecal pellets attached to its walls (Fig. 11, right arrow). The tunnel was closed with a plug of dung fibers (Fig. 11, left arrow). Adjacent to the secondary tunnel were located three more cells (cells 2-4). Cells 2 and 3 branched from the same point of the tunnel. Cell 2 was perpendicular to the main tunnel, whereas cell 3 was oriented in an acute angle to it. Cells 2 and 3 were 2.6 cm long and 0.8 cm in diameter. Both cells were located inside old cocoons (Fig. 12) and contained yellow packed pollen and a larva in each one. The larva from cell 2 was younger than that from cell 3 (Fig. 13). In addition, at 2.5 cm from the entrance and in front of the secondary tunnel was located a fourth cell (cell 4), inside an old cocoon. The cell 4 was 2.5 cm long, 0.8 cm in diameter, and contained packed pollen that seemed to be old because of its dryness and decoloration. At the sinuous, middle part of the main tunnel, were located three more cells (cells 5-7). Two of them (cells 5 and 6) at one side were straight and perpendicular to the main tunnel. Both cells were 1.5 long, 0.8 cm in diameter, and were empty, containing only old emerged cocoon. Cell 7, at the other side, was oriented at an angle to the main tunnel and was 2.5 long and 0.8 mm in diameter. It was also empty and contained only emerged old cocoon.

Nest 6 (Fig. 19): it was located in a piece of dung 8 cm long, 5.6 cm wide, and 4 cm high (Figs 4 and 7). The entrance was open and located on top. There were dung fibers and pollen grains on the dung around the entrance (Fig. 4). The main tunnel, slightly curved and inclined downwards, was 5.9 cm long and 1 cm wide finishing in an open series of two cells without partitions. The wall of the main tunnel had pollen grains adhering that gave it a yellow appearance. At 3.2 cm from the entrance arose an open and empty lateral tunnel. It was 1.9 cm long and 1 cm wide, with a rounded end (Fig. 19). At the end of the main tunnel was a series of two cells of 2.5 cm long and 1 cm in diameter. The series of cells had packed pollen and two eggs, located in individual chambers 1.5 cm apart.

Discussion

Trichothurgus bolitophilus shares with most Lithurgini several behavioral characters. However, one important difference is striking: the substrate used for nesting. Typically, members of *Lithurgus* nest in dead, soft to relative hard dry wood or cactus (Rozen 1973; Roberts 1978; Kitamura et al. 2001; Rust et al. 2004). The first mention of the nesting biology of a member of *Trichothurgus* was by Claude-Joseph (1926), who found cells of *T. dubius* inside an old nest of *Odynerus humeralis* (Vespidae: Eumeninae). Later, in the only other report on nests of *Trichothurgus*, Rozen (1973) described cells and cocoons of the same species in dead cactus.

Trichothurgus bolitophilus excavates its nests in horse dung. It is difficult to understand the advantages to nest in dung pads on Patagonian plateaus. Cows are absent at this altitude so the only providers of this type of dung are horses, which are scarce and restricted to house surroundings. They were introduced in this continent in historical times, all of which suggest that *T. bolitophilus* must have had, and still has, alternative nesting substrates, which probably are similar in texture to dung. Other plant substrates used by Lithurgini are strong candidates. Cactaceae are present in the region, although these plants are also scarce and small. Dry cushions of *Azorella monantha* (Araliaceae) form a structure similar in aspect and texture to dung pads. Also wood from houses and fence posts may be alternative substrates in historical times. However, we failed to find nests in these substrates. Beside scarcity, exposed dung is subject to harsh environmental conditions. Strong winds are very common in Patagonia, which can blow easily dung pieces such as where nest 6 was found. In winter, these plateaus are covered with snow and the cold would seem to be too intense for the overwintering imago or post-defecating larvae to be protected only by a centimetric layer of dung on the soil surface.

Typically, members of Lithurgini are considered to be oligolectic bees (Michener 2000), although *Lithurgus collaris* was observed to collect pollen from different families of plants (Kitamura et al. 2001; Hannan and Maeta 2007). Other species of *Lithurgus* gather pollen from Cactaceae, Malvaceae, Asteraceae and Convolvulaceae (Houston 1971; Rust et al. 2004). The only reference for *Trichothurgus* indicates that at least some species forage in cactus (Claude-Joseph 1926; Ruiz 1940; Toro et al. 1996; Michener 2000). The pollen analysis from cell contents in *T. bolitophilus* revealed the presence of Asteraceae, which was abundant at locality 1. Pollen of Amaranthaceae was also present in roughly same proportions as Asteraceae. In many other behavioral characteristics, such as the presence of several eggs in the same provision, unlined cells, and reutilization of nests by subsequent generations, *Trichothurgus bolitophilus* is similar to other Lithurgini. There are some architectural characters that show some differences. In nests of *T. bolitophilus*, cells were connected directly to the main tunnel, whereas in those of other species, such as *Microthurge corumbae* (Garófalo et al. 1981), *L. chrysurus* (Roberts 1978) and *L. collaris* (Kitamura et al. 2001), nests are composed of several secondary tunnels leading to numerous cells. The secondary tunnel of nest 5 was not actively used suggesting the

possibility that it was not a true branching of the present nest but a remnant of an old nest. Two nests of *T. bolitophilus* had an empty, blind, secondary tunnel (nests 4 and 6), whose function was not clear. They may be excavations for future cells. *Lithurgus huberi* (Camillo et al. 1983) and *M. corumbae* (Garófalo et al. 1981; Hannan and Maeta 2007) had blind tunnels near the entrance. Garófalo et al. (1981) called them “chambers” suggesting that they may be used as resting or guarding places, whereas Hannan and Maeta (2007) indicated that those structures may be used for facilitating movements inside the nest.

In most Lithurgini the cells are arranged in series (Roberts 1978; Rust et al. 2004), which may be separated by transverse partitions of wood-dust (Roberts 1978). In nests of some species, such as *Lithurgus chrysurus* (Roberts 2004), *L. atratiformis* (Houston 1971), and *L. fuscipennis* (Malyshev 1930) these partitions may be facultatively absent. Partitions between cells were absent in all cases in *Trichothurgus bolitophilus*, as well as in all nests observed of *Microthurge corumbae* (Garófalo et al. 1981) and *L. collaris* (Litman et al. 2001, Hannan and Maeta 2007). The tunnels and cells of *T. bolitophilus* were unlined as in the rest of lithurgines (Litman et al. 2011). The absence of a lining in lithurgine nests was originally attributed to a behavioral loss associated with above-ground nesting (Malyshev 1930). However, a recent phylogenetic analysis of the Megachilidae by Litman et al. (2011) suggested, since the lithurgines are a basal group of the family, this character may represent an ancestral trait in this clade.

Lithurgus chrysurus, *L. collaris*, *L. huberi* and *Microthurge corumbae* all, at least occasionally, reutilize their nests (Roberts 1978; Kitamura et al. 2001; Garófalo et al. 1992; Hannan and Maeta 2007; Camillo et al. 1983). In *Trichothurgus bolitophilus*, nests 2 and 5 had recently provisioned cells that contained remains of old cocoons against the walls, indicating a nest reutilization for this species as well. The reuse of the same substratum was proposed as a primitive social strategy shown by certain bees and wasps (Camillo and Garófalo 1989). However, in *T. bolitophilus* the reutilization of the same nest is probably more related to the exploitation of scarce substrata. In fact, the utilization of dung horse pads as nest sites probably represents an alternative strategy for when the plant substrates commonly used by lithurgines are scarce.

Taxonomy

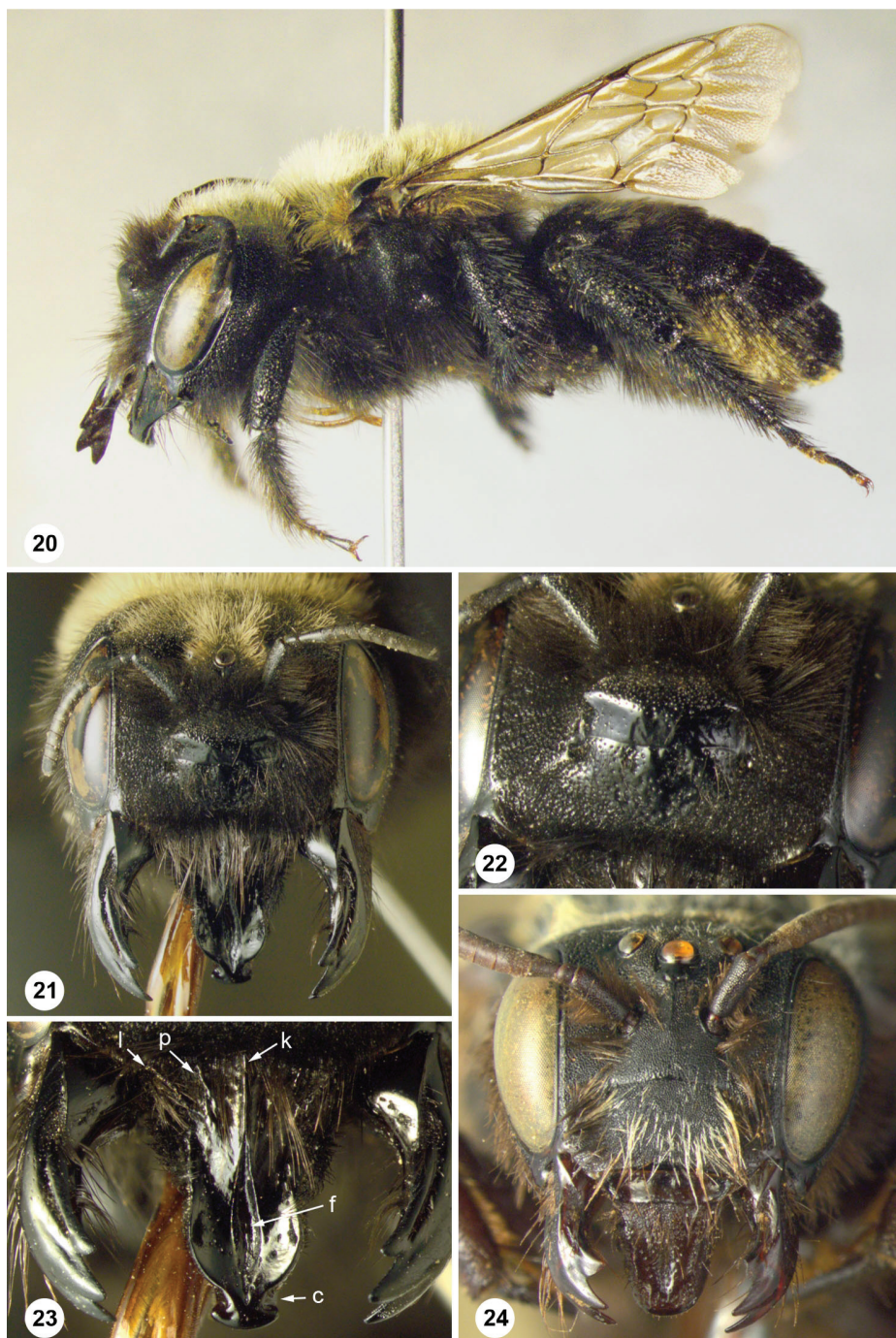
Trichothurgus bolitophilus Durante & Roig Alsina, sp. n.

[urn:lsid:zoobank.org:act:21847924-C4A8-4A78-8501-E252DC0EB426](http://zoobank.org/act:21847924-C4A8-4A78-8501-E252DC0EB426)

http://species-id.net/wiki/Trichothurgus_bolitophilus

Figs 20, 24

Description. *Female holotype.* Body length 13.6 mm (paratypes, 13.0–16.0 mm), length of forewing 9.2 mm, maximum width of head 5.9 mm, maximum length of head 4.5 mm. *Coloration.* Integument black except under surface of flagellum and tibial spurs dark bseriesn; front tibial spur and claws dark ferruginous (later black api-



Figures 20–24. *Trichothurgus bolitophilus* Durante & Roig Alsina, sp. n. **20** female holotype, habitus **21** female paratype Pampa Pelada, face **22** female paratype Pampa Pelada, detail of clypeus and facial prominence **23** female paratype Pampa Pelada, labrum: k, median longitudinal keel; p, paramedian carina; l, lateral carina; f, longitudinal furrow; c, preapical constriction **24** male, face.

cally). Wings evenly weakly infusate, with apex appearing darker, due to black papillae; veins and pterostigma blackish.

Pubescence. Black, with yellowish hairs as follows: on vertex, between ocelli, dorsal portion of pronotum including pronotal lobe, scutum, scutellum, axillae and metanotum. Hairs on T1-T4 black at sides and dark brown medially, on T2-T5 forming black apical bands; T6 with dense covering of coarse, black hairs. Scopa black.

Punctuation. Integument generally coriaceous, except smooth and shiny on labrum, clypeus, mandible, supraclypeal area below protuberance, around lateral ocellus, malar area, and on center of scutum. Clypeus with punctuation sparse and irregular on basal medial area; punctures becoming smaller and denser toward apical and lateral margins. Supraclypeal area with few, scattered punctures below protuberance. Rest of head with small and dense punctures, except around ocelli. Mandibles unpunctured except on outer interspace. Scutum on mid-posterior region with large punctures separated by 0.3-1 times their diameter; punctures becoming smaller and denser on rest of surface; anteriorly with dense, poorly defined punctures. Scutellum and axilla with punctures separated basally, and denser toward posterior margin. Metapostnotum microsculptured. T1 with sparse, shallow punctures apically, separated by twice their diameter; punctures on T2-T5 becoming denser toward apex of metasoma.

Structure. Inner margins of eyes straight, subparallel, slightly divergent below (upper to lower interocular distance 0.97; paratypes 0.95-1.01); paraocular carina present. Lengths of scape, 1.20; pedicel, 0.24; flagellomeres 1 to 3, 0.42: 0.22: 0.22; flagellomere 10, 0.30; first flagellomere shorter than combined lengths of flagellomeres 2+3. Interantennal distance longer than distance from antennal insertion to median ocellus (1.10-0.50), shorter than antennocular distance (1.10-1.35), and subequal to antenoclypeal distance (1.10-1.00). Labrum 1.07 times as long as basal width (paratypes 1.03-1.35); base of labrum with median longitudinal keel (0.11 times length of labrum; variable in paratypes, 0.08-0.28, Fig. 23, k) short paramedian carina (Fig. 23, p) and strong lateral carina (Fig. 23, l); median keel continued apically by deep longitudinal furseries (Fig. 23, f) reaching preapical constriction (Fig. 23, c) (width of furseries 0.60 times median ocellar diameter; paratypes 0.74-0.88); median part of labrum broadened, with convex lateral margins (maximum width of median part 3.7 times median ocellar diameter; paratypes, 3.57-3.94); apex beyond constriction laterally pointed, and apically rounded to weakly pointed (some paratypes) (constriction as wide as median ocellar diameter; paratypes, 0.79-1.11). Clypeus flat, 0.73 times as long as basal width (paratypes 0.62-0.68); apical margin medially straight (Fig. 22). Supraclypeal area with facial protuberance prominent, convex in dorsal view, not carinate, laterally with conical projections (these projections are more developed in larger specimens) (Figs 21-22). Median ocellus located below supraorbital line; proportion of interocular distance to ocellocular distance 0.64 (paratypes, 0.54-0.55); proportion of interocular distance to ocellocipital distance, 0.54 (paratypes, 0.46-0.50). Gena broader than eye in lateral view (1.17; paratypes, 1.25-2.66).

Observations. This species is closely related to *Trichothurgus laticeps* (Fries) and *T. dubius* (Sichel) by the shape of the labrum, with a preapical constriction, and the

similar shape of the facial prominence, with short lateral conical projections. It is intermediate in the color pattern of the vestiture, being *T. laticeps* entirely black, and *T. dubius* extensively white. The base of the labrum and the shape of the apical portion are different in the three species. The apex beyond the constriction is rounded in *T. laticeps* and *T. dubius*, without lateral conical projections. The base of the labrum in *T. dubius* bears a bifid projection, while in *T. laticeps* it bears a spiniform projection and several rugae between the median keel and the paramedian carinae.

A single male with the same labels as the female from Patagonia, San Jorge, is tentatively associated. Diagnostic structures of the labrum and the face in *Trichothurgus* are different in females and males, making sex association very difficult. This male has a similar color pattern, except that it bears white hairs on the face and on the first tergum. It completely lacks a facial protuberance, being the supraclypeal area slightly convex. Both the supraclypeal area and the clypeus are densely micropunctate, with the punctures coalescent, giving a dull appearance (Fig. 24). The labrum has a basal transverse depression delimited by a carina, the apex is rounded, and the median longitudinal depression is shallow (Fig. 24). The base of the labrum in *T. laticeps* and *T. dubius* is depressed laterally only, bearing medially a rounded protuberance which is not carinate apically. Males of *T. laticeps* are further differentiated by the sparser punctures with shiny interspaces on the clypeus and supraclypeal area.

Etymology. The name refers to the habits of this species, which makes its nests in dung pads (*boliton*, greek).

Distribution. Argentina, provinces of Santa Cruz, Chubut and Mendoza.

Material examined. Argentina. Holotype ♀: Chubut, ruta 24 entre Sarmiento y Paso de Indios, 44°37'35.20S, 69°7'30.10W, 529 m s.n.m., XII-2010, Genise col. (MACN); 2 ♀ paratypes, Chubut, Pampa Pelada, 45°4'54.89S, 68°2'48.68W, 20-XII-2010, Genise col. (MACN); 1 ♀ paratype, Patagonia, San Jorge (the San Jorge Gulf occupies the southern part of the province of Chubut and the northern part of the province of Santa Cruz) (MACN); 1 ♂ (tentatively associated) Patagonia, San Jorge (MACN); 1 ♀ paratype, Santa Cruz, ruta 3, El Salado, 22-II-1980, Willink, Fidalgo, Dominguez & Claps col. (IFML); 1 ♀ paratype, Mendoza, Ruta Termas Sosneado km 42, 11-I-1980, Willink, Fidalgo, Dominguez & Claps col. (IFML).

Acknowledgements

We thank Liliana Seoane for the identifications of pollen, Daniel Speranza for helping to draw and interpret the architecture of the nests, Pablo Puerta for his assistance in the field and two anonymous reviewers and the editor for their comments on the manuscript. This is a contribution of PICT 1972 from the Agencia Nacional de Promoción Científica y Tecnológica of Argentina to Jorge F. Genise.

References

- Brach V (1978) Notes on the biology of *Lithurgus gibbosus* Smith in Florida. Bulletin of the Southern California Academy of Science 77: 144–147.
- Burry LS, D'Antoni HL, Frangi JL (2005) Polen y vegetación en la Patagonia extraandina argentina a 45°S. Anales del Jardín Botánico de Madrid 62: 143–152. doi: 10.3989/ajbm.2005.v62.i2.15
- Camillo E, Garófalo CA, Campos MJO, Serrano JC (1983) Preliminary notes on the biology of *Lithurgus huberi* (Hymenoptera, Megachilidae). Revista Brasileira de Biologia 43: 151–156.
- Camillo E, Garófalo CA (1989) Social organization in reactivated nests of three species of *Xylocopa* (Hymenoptera, Anthophoridae) in southeastern Brazil. Insectes Sociaux 36: 92–105. doi: 10.1007/BF02225905
- Claude-Joseph F (1926) Recherches biologiques sur les Hymenopteres du Chilli (Melliferes). Annales Sciences Naturelles, B, Zoologie 10: 113–268.
- Cros A (1939) Considérations generales sur le genre *Lithurgus* Latreille et biologie du *Lithurgus tibialis* Mor. Bulletin de la Société Fouad I^{er} d' Entomologie 22: 37–57.
- Garófalo CA, Camillo E, Campos MJO, Serrano JC (1992) Nest reuse and communal nesting in *Microthurga corumbae* (Hymenoptera, Megachilidae), with special reference to nest defense. Insectes Sociaux 39: 301–311. doi: 10.1007/BF01323950
- Garófalo CA, Camillo E, Campos MJO, Zucchi R, Serrano JC (1981) Bionomical aspects of *Lithurgus corumbae* (Hymenoptera, Megachilidae), including evolutionary considerations on the nesting behavior of the genus. Revista Brasileira de Genetica IV: 165–182.
- Hannan M, Maeta Y (2007) Nesting Biology and the Nest Architecture of *Lithurgus* (*Lithurgus*) *collaris* Smith (Hymenoptera: Megachilidae) on Iriomote Island, Southwestern Subtropical Archipelago, Japan. Journal of the Kansas Entomological Society 80: 213–222. doi: 10.2317/0022–8567(2007)80[213:NBATNA]2.0.CO;2
- Houston TF (1971) Notes on biology of a lithurgine bee (Hymenoptera, Megachilidae) in Queensland. Journal of the Australian Entomological Society 10: 31–36. doi: 10.1111/j.1440–6055.1971.tb00007.x
- Kitamura K, Maeta Y, Takahashi K, Miyanaga R (2001) Nest architecture of a Japanese lithurgine bee *Lithurgus* (*Lithurgus*) *collaris* Smith (Hymenoptera, Megachilidae), with notes on the relationship between burrow diameter and thickness of thorax in various taxa of bees. Japanese Journal of Entomology (New Series) 4: 49–61.
- Litman JR, Danforth BN, Eardley CD, Praz C (2011) Why do leafcutter bees cut leaves? New insights into early evolution of bees. Proceedings of the Royal Society, Serie B, 278: 3593–3600. doi: 10.1098/rspb.2011.0365
- Malyshev SJ (1930) Nistgewohnheten der Steinbienen, *Lithurgus* Latr. (Apoidea). Zeitschrift fuer Morphologie und Oekologie der Tiere 19: 116–134. doi: 10.1007/BF00412291
- Michener CD (2000) The Bees of the World. John Hopkins University Press, Baltimore, Maryland, xiv+[1]+913 pp.

- Parker FD, Potter HW (1973) Biological notes on *Lithurgus apicalis* Cresson. Pan-Pacific Entomologist 49: 294–299.
- Roberts RB (1978) The nesting biology, behavior and immature stages of *Lithurgus chrysurus* an adventitious wood-boring bee in New Jersey (Hymenoptera, Megachilidae). Journal of the Kansas Entomological Society 51: 735–745.
- Rozen JG (1973) Immature stages of Lithurgine bees with descriptions of the Megachilidae and Fideliidae based on mature larvae (Hymenoptera, Apoidea). American Museum Novitates 2527: 1–14.
- Ruiz FP (1940) Apidología chilena. Parte I. Revista Chilena de Historia Natural 44: 282–377.
- Rust RW, Cambon G, Torre Grossa JP, Vaissière BE (2004) Nesting Biology and Foraging Ecology of the Wood-Boring Bee *Lithurgus chrysurus* (Hymenoptera: Megachilidae). Journal of the Kansas Entomological Society 77: 269–279. doi: 10.2317/0402.17.1
- Toro H, Chiappa EM, Covarrubias R (1996) Diversidad de apoidea (Hymenoptera) y su asociación a la vegetación nativa en el Norte de Chile, 2a Region. Revista Chilena de Entomología 23: 65–81.